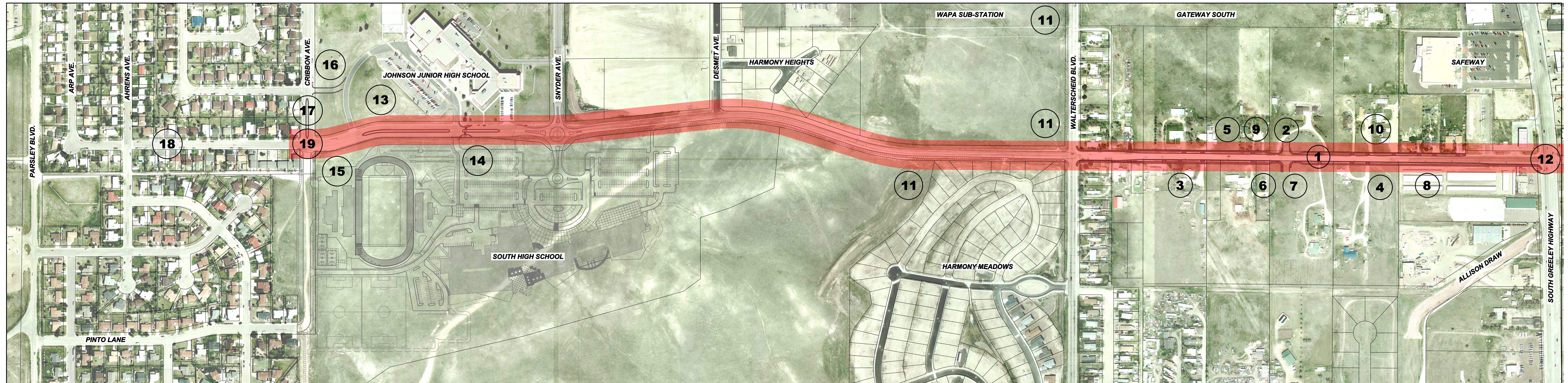


WEST ALLISON ROAD

(SOUTH GREELEY HWY TO PARSLEY BLVD) PROJECT RECOMMENDATIONS



PROJECT RECOMMENDATIONS # RECOMMENDATION LOCATION

- 1 65 FT RIGHT-OF-WAY MODIFIED TO 80 FT AS DEVELOPMENT OCCURS IN THE AREA
- 2 INTERSECTION FOR NORTH/SOUTH ROAD TO CONNECT WEST JEFFERSON ROAD AND WEST PROSSER ROAD
-INTERSECTION SHOULD BE LOCATED AT APPROXIMATE MID-POINT BETWEEN SOUTH GREELEY HWY AND WALTERSCHEID BLVD
-THE FINAL LOCATION SHOULD BE DETERMINED AT FINAL DESIGN AND BY DEVELOPMENT ALONG THE CORRIDOR
-A ROUNDABOUT IS THE PREFERRED INTERSECTION CONTROL DEVICE
- 3 10 FT GREENWAY CONNECTOR FROM WALTERSCHEID BLVD TO NEW INTERSECTION
-FROM NEW INTERSECTION, GREENWAY CONNECTOR SHOULD RUN SOUTH AND CONNECT TO EXISTING GREENWAY ALONG ALLISON DRAW
-CANNOT BE CONSTRUCTED UNTIL SOUTHERN RIGHT-OF-WAY HAS BEEN DEDICATED
- 4 8 FT MULTI-USE PATH FROM NEW INTERSECTION TO SOUTH GREELEY HIGHWAY
-CANNOT BE CONSTRUCTED UNTIL SOUTHERN RIGHT-OF-WAY HAS BEEN DEDICATED
- 5 6 FT SIDEWALK FROM WALTERSCHEID BLVD TO SOUTH GREELEY HWY
- 6 UPGRADE EXISTING WATER AND SEWER UTILITIES PRIOR TO REBUILDING ROAD BETWEEN SOUTH GREELEY HWY AND WALTERSCHEID BLVD
- 7 MOVE OVERHEAD UTILITES UNDERGROUND, IF POSSIBLE, OR FUTHER AWAY FROM THE ROAD
- 8 REGRADE HIGH POINT ON ALLISON ROAD APPROXIMATELY 700 FT WEST OF SOUTH GREELEY HWY TO IMPROVE SIGHT DISTANCE
- 9 INSTALL DROP INLETS APPROXIMATELY 1000 FT EAST OF WALTERSCHEID BLVD AND CONNECT TO EXISTING STORM SEWER FACILITIES
- 10 INSTALL DROP INLETS AT LOW POINT BETWEEN SOUTH GREELEY HWY AND WALTERSCHEID BLVD (APPROXIMATELY 1000 FT WEST OF SOUTH GREELEY HWY)
-CONVEY RUN-OFF FROM INLETS SOUTH TO ALLISON DRAW VIA STORM SEWER AND OPEN CHANNEL FACILITIES
- 11 DETENTION PONDS ARE RECOMMEND AT THE FOLLOWING LOCATIONS WITH THE FUTURE DEVELOPMENT OF THOSE PROPERTIES:
-NORTHWEST CORNER OF WEST ALLISON ROAD/WALTERSCHEID BLVD INTERSECTION
-NORTHEAST CORNER OF PROPERTY BETWEEN SOUTH HIGH SCHOOL AND HARMONY MEADOWS
-SOUTHEAST CORNER OF WAPA SUB-STATION ALONG WALTERSCHEID BLVD
- 12 ADD RIGHT-TURN LANE AT THE SOUTH GREELEY HWY INTERSECTION
-COORDINATE WITH WYDOT TO TIME SIGNAL
- 13 INSTALL LANDSCAPED MEDIAN BETWEEN SNYDER AVE AND CRIBBON AVE
- 14 INSTALL BUMP-OUTS ON EAST SIDE OF MAIN ENTRANCE TO JOHNSON JUNIOR HIGH
-CONSTRUCT OFF-SET CROSSWALK BETWEEN NORTH AND SOUTH BUMP-OUTS
- 15 STRIPE PARKING LANES ON NORTH AND SOUTH SIDES OF WEST ALLISON ROAD BETWEEN SNYDER AVE AND CRIBBON AVE
- 16 ADD SECOND EXIT FROM JOHNSON JUNIOR HIGH ONTO CRIBBON AVE
- 17 INSTALL LANDSCAPED MEDIAN IN CRIBBON AVE NORTH OF WEST ALLISON ROAD
- 18 MAKE NO CHANGES TO WEST ALLISON ROAD BETWEEN CRIBBON AVE AND PARSLEY BLVD
-MODIFICATIONS TO THIS SECTION SHOULD BE EVALUATED AT ANY OF THE FOLLOWING MILESTONES:
+THE CONNECTION OF WEST ALLISON ROAD TO SOUTHWEST BLVD IS MADE
+PARSLEY BLVD IS UPGRADED TO AN URBAN ARTERIAL SECTION
+THE AREA WEST OF PARSLEY BLVD DEVELOPS
- 19 EVALUATE ROUNDABOUT AT INTERSECTION OF WEST ALLISON ROAD AND CRIBBON AVE
-ANALYSIS SHOULD TAKE PLACE WHEN WEST ALLISON ROAD CONNECTION IS MADE TO PARSLEY BLVD

LONGTERM RECOMMENDATIONS

